



Accessory

Retrofit Solar Roof Kits (RSRK) Specifications, FAQ and Price

Chet Long
Operations and Sales Manager



There are over 400 golf courses within 90 minutes of Toronto. [Click here to find one that's close to you.](#)

ACCESSORY

Conserve Electricity, Harness Free Fuel to Improve Transportation Efficiency while adding year around income to Golf Course



- Kit includes top, brackets, wiring, controller and installation instructions. Solar roof kit is sold as an accessory.
- Price: \$2,450 each* FOB Pickering, Ontario.
- Freight, insurance and installation is extra.

➤ Solar roof kit allow cart drivers to generally add about 5 miles of free driving a day**, while extending the battery life by at least 30%.

◆**Under ideal conditions, load, terrain etc.
◆* Price subject to change without notice.
◆* For lead time please contact Head office



Kudo SX6



FITS MOST POPULAR GOLF CART MODELS!



There are over 400 golf courses within 90 minutes of Toronto. Click here to find one that's close to you.

Specifications

Retrofit SOLAR ROOF KIT...

Converting a cart to a Sunray top will benefit the end user by increasing the distance the cart can go on a single charge by 30%.

Solar panels can generate up to 180 watts, 60 volts and supply a hefty 3 amps directly to a 36 or 48 volt battery.

As long as the vehicle is in the sun, the battery is constantly recharging itself through the solar panel.

ACCESSORY



FITS MOST POPULAR GOLF CART MODELS!

An easy to assemble solar roof retrofit that fits most popular golf cart models.

This revolutionary new product offers an easy and affordable way for golf cart users to

GO GREEN.

No gas is required to run a solar cart!

All technical data at standard test condition

(1) Model SSR 36V

Rated Maximum Power (Pmax) 160W
Current at Pmax (Imp) 2.65A
Voltage at Pmax (Vmp) 50.30V
Short-Circuit Current (Isc) 2.70A
Open-Circuit Voltage (Voc) 85.25V
Nominal Operating Cell Temp 120 F
Cell Technology Mono-Si

(2) Model SSR 48V

Rated Maximum Power (Pmax) 160W
Current at Pmax (Imp) 2.31 A
Voltage at Pmax (Vmp) 69.2V
Short-Circuit Current (Isc) 2.46A
Open-Circuit Voltage (Voc) 87.31V
Nominal Operating Cell Temp 120 F
Cell Technology Mono-Si

Overall Dimensions 72"L x 43.5"W x 3" Deep

Solar Panel Weight 34 lbs

Solar Panel with Roof Frame 43 lbs

All technical data at standard test condition

AM=1.5, E=1000W/m² Tc=25 C

NOTE: Solar Roof kits are ideally suitable for all Club Car and EZGO models between year 2000 and 2007....

Warrantee is 25 years at 80% efficiency..for more Tel: 416.236.1001

Solar Structure Solutions



There are over 400 golf courses within 90 minutes of Toronto. Click here to find one that's close to you.

FREQUENTLY ASKED QUESTIONS

RETROFIT SOLAR RETROFIT ROOF KIT...

Solar Panel: Up to 180 watts

Flexible Frame Mounting: Unique design for golf cart that allows roof to be adjusted for various uses

Fram Wiring; e Cushion/Stabilizer: Cushion to control mobility structural impact

Stainless Aluminum: All screws, nuts and bolts rust proof

Washers and Connectors: Marine grade or comparable

Support Posts: Powder coated design to fit all major brands. Pre-wired through support posts that will attach to batteries

Diode: Will be incorporated into regulator

Regulator: Unique design for regulating battery voltage.



How does the solar work?

The solar cells, built into the panel, convert sunlight to electricity just like a solar calculator only with a lot more power.

How much power does the solar panel produce?

The solar panel is designed to charge a 36 or 48 volt battery system. The panel produces up to 180 watts at 60 volts to charge the 36 or 48 volt batteries, thus, up to a 3 amp continuous charge is being produced from the panel when exposed to direct sunlight.



Kudo SX6



There are over 400 golf courses within 90 minutes of Toronto. [Click here to find one that's close to you.](#)

FREQUENTLY ASKED QUESTIONS

RETROFIT SOLAR ROOF KIT...

How does that affect the vehicle?

It increases the range of the vehicle between charges by up to 33%. So if a regular, non-solar vehicle gets 40 miles between charges, the Sunray Solar vehicle will travel 55 miles between regular plug in charges.

Another benefit is that the solar will extend the battery life by giving the batteries a continuous charge.

If a normal set of batteries last three years, the solar roof kit could extend the battery life an additional two years or more.



Also, the vehicle is a portable solar generator. If the regular power goes out, you can install an optional 12 volt plug so you can plug 12 volt appliances into it such as a small TV, lights and even a small refrigerator.

If you plug an inverter into the 12 volt socket you can operate regular 110 volt appliances off of the batteries.

Finally, the Solar roof kit has no moving parts and is designed to last 20 years, assuming it is not damaged by an accident. The Sunray Solar Top will never lose its value and when sold to a new owner, that owner will be able to take advantage of various Government [incentive](#) programs.



**Go Green
Golf Courses
Accessory Adds Income**



There are over 400 golf courses within 90 minutes of Toronto. Click here to find one that's close to you.

Golf Courses - Go Green - Add Income

(1) During Season - One Free round \$\$\$ (Add 5 miles of free driving), Extend the battery life by at least 30%. conserve energy, save environment and ecology. Retrofit solar roof kit is being retailed as an accessory through "Dealers" network.

(2) Off Season - Add capacity:

For example: 20 solar roof kits x 160 Watt = 3.2KW
Generates additional \$\$\$ / off season
Off season Investment - ?? and ROI - ?? %

For Concept engineering contact - Solar Planner or Nuworld Research



Sunray SX2

By Others - Structure to accept solar roof kits



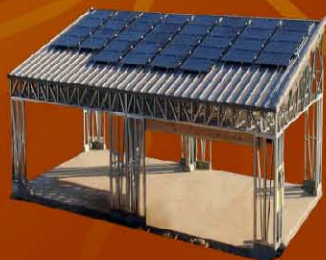
\$\$ Reimbursement from Incentive Programs \$\$
Contact: Solar Planner or Nuworld Research

Existing Filling or Charging Stations:

Solar PV @\$0.80 per KWhr, OPA-FIT Program - capacity less than 10 KW
Yearly Income - For example 5KW will generate \$\$\$ / year with Estimated Investment \$\$\$ and ROI of ?? %
Contact: Solar Planner or Nuworld Research



**Add Capacity: For example:
Existing Filling Station 4.8 KW
Plus During off season
add capacity 3.2 KW
= 8 KW**





There are over 400 golf courses within 90 minutes of Toronto. Click here to find one that's close to you.

Golf Courses - Add year around income Concept Engineering or Business Case Development

Retrofit Solar Roof Kits create year around income for Golf Courses: (1) Add 5 miles of free driving a day, (2) Extend the battery life by at least 30%, And (3) During winter when Golf Course is closed - Add capacity @\$0.80 / KWhr through an existing filling station.



During winter - Take off from Solar - electric golf carts and mount on specially designed structure to
*Add Capacity for example
20 kits 160 Watt = 3.2 KW
8 hrs/day 180 days
Add \$\$\$\$

Filling Station



For, Concept Engineering or
Business Case Development
Contact: Solar Planner
416-433-6622

During Summer - Take off from structure and retrofit on golf carts to add one free rental per day \$xx, plus income for solar power production \$xx per KWh plus conserve electricity and improve transportation efficiency



OPA-FIT Program Solar PV @\$0.80 per KWhr, capacity less than 10 KW (Filling Stations) for example 5KW generates \$\$\$\$\$ / year *(+ \$\$\$)



There are over 400
golf courses within
90 minutes of Toronto.
Click here to find one
that's close to you.

Retrofit Utility and Golf Carts...

Solar Planner helps owners to choose, prepare, prequalify, participate, monitor and report savings, resulting improved return on investment



Retrofit Solar Roof Kit



Off-Season concept engineering to Add Capacity

Parks, Zoo, Resorts,
Entertainment Centers
Golf Course Owners
Please Call or Email
Chet Long
at 416.236.1001
chet@albiongolfcars.com